

# Monument Branch

## Children's



### Storytime

Stories and more for children age 3 and older. Check your branch, or the Children's section for storytime themes.  
**Tuesdays • 10 and 10:45 a.m.**

### Snuggle Up Storytime

A special family storytime suggested for children older than 3 years old. Parents are encouraged to participate, and children can wear their favorite pajamas and bring a cuddly toy.  
**Thursdays • 7:30 p.m.**

### Toddler Time

This program gives an introduction to the delights of rhyme, rhythm, and a few special stories as a first step to reading for 1- and 2-year-old children and caregivers. The program lasts approximately 20 minutes.  
**Thursdays • 10 and 10:30 a.m.**

### Book Break

A short read-aloud session that is particularly suitable for preschoolers. These are held on mornings when there is no regular Storytime or Toddler Time.  
**Mondays, Wednesdays, and Fridays • 10:30 a.m.**

### Paws to Read

Let your child practice reading and build fluency by reading to a Paws to Read dog. No registration required.  
New! **Mondays 4:30 - 5:30 p.m.**  
**Wednesdays 3:30 - 4:30 p.m.**

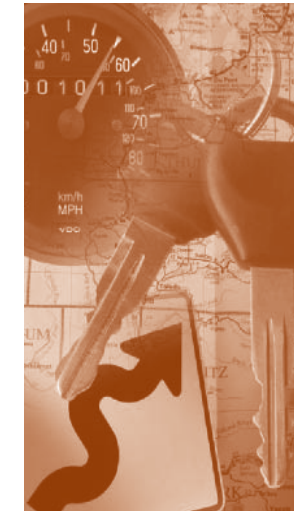


### Pillar Players Present: My Favorite Husband

Remember the days of radio entertainment? This is your opportunity to "watch" the radio show! Laugh as the Pillar Players reenact this hilarious performance using all the typical sound effects from times gone by. Light lunch will be served.  
**Wed., Nov. 11 • noon - 1 p.m.**

### AARP Mature Safe Driving Program

A driver refresher course specially designed for motorists age 50 and older. Graduates may present their course completion certificate to their insurance agents for a discount. Charge for the eight-hour course is \$12 for AARP members and \$14 for non-members. Class size is limited and registration is required.  
**Sat., Nov. 21 • 9:30 a.m. - 5:30 p.m.**



# Palmer Lake Branch



### Paws to Read

Let your child practice reading and build fluency by reading to a Paws to Read dog. No registration required.  
**Sat., Nov. 7 • 11 a.m. - noon**  
**Thu., Nov. 19 • 4:30 - 5:30 p.m.**

### Family Fun

Make your own Zany Wooden Toy from the book, and meet the author. Bob Gildorf will help you make a tissue-launching crossbow and introduce you to some other simple, fun, and very silly wooden toys from his new book, *Zany Wooden Toys that Whiz, Spin, Pop, and Fly*. Best for ages 6 and older. Register by calling 481-2587. Space is limited.  
**Sat., Nov. 21 • 10:30 a.m.**

### Storytime

Join us for stories and more for children age 3 and older.  
**Wednesdays at 10:30 a.m.**

### Toddler Time

This program gives an introduction to the delights of rhyme, rhythm, and a few special stories as a first step to reading for 1- and 2-year-old children.  
**Fridays • 10:30 a.m.**

Palmer Lake Book Group  
New members are welcome and no registration is required at this monthly book club. This month's selection is *Affluenza: the All-Consuming Epidemic*.  
**Fri, Nov. 6 • 9 a.m.**

## Special Programs



### Family Fun: Tarantulas and Other Creepy Crawlies!

Meet amazing arachnids, millipedes, scorpions, and more! Tarantula wrangler Rowen Monks is back with an assortment of wild insects.  
**Sat., Nov. 14 • 1:30 p.m.**

### Read It Before You See It *Fantastic Mr. Fox*

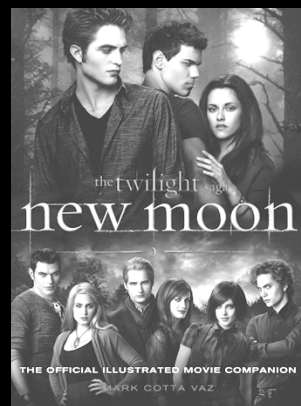
Join us for fun discussion, an activity, popcorn, and a drawing for a free movie ticket to go see the movie (must be present to win)! For ages 7 - 12. Registration is required; call or drop by to register.  
**Wed., Nov. 18 • 4:15 - 5:15 p.m.**



## Teen Programs

### New Moon Launch Party

Celebrate National Teen Gaming Day and the release of *New Moon* by playing *New Moon Jeopardy* at the library. Bring your friends from the werewolf or vampire clans (grades 7-10 only) for plenty of food and fun. Dress up as a werewolf, a Cullen, or a surprise visitor to Bella's prom in foggy Forks.  
**Sat., Nov. 14 • 4 - 6 p.m.**



### Art and Display Exhibits

**My Watercolor Pastime**  
Sharon Fong, a 24-year resident and freelance artist will display her lovely watercolors. Her artworks include Asian, aspen, and abstract paintings.

**Depression Glass**  
Depression glass has been an important collectible since the 1960s. It is clear or colored translucent glassware that was distributed for free or at a low price in the United States at the time of the Great Depression.

### Basic Internet Genealogy

Learn more about accessing the many free genealogy websites the library links you to.  
**Fri., Nov. 13 10:30 a.m. - noon**

### TALK English!

Join these informal conversation circles for adults who want to improve their skill and comfort speaking English. No registration is required.  
**Mondays • 7 p.m.**

### Senior Synergy

All seniors are welcome to share conversation and a cup of coffee in this casual discussion group.  
**Wednesdays 10 a.m.**

### Socrates Café

This adult group discusses philosophy, religions, spirituality, and the common threads among humanity. Call 488-2370 for more information.  
**Tuesdays • 1 p.m.**



### History Buffs

Every month this group picks a period of history and members read any book of their choice from that time period. Expect a lively discussion about the era.  
**Wed., Nov. 25 • 1 p.m.**

### Book Group Monumental Readers

New members are welcome and no registration is required at the monthly book club. This month's selection is *Ethan Frome* by Edith Wharton.  
**Fri., Nov. 20 • 10 a.m.**



Nov. 2009

Online: [ppld.org](http://ppld.org) • On demand: [ppld.tv](http://ppld.tv)

SEEK • ENGAGE • TRANSFORM

MONUMENT & PALMER LAKE BRANCH LIBRARIES

